

OWNER'S MANUAL

Please Read This Manual Before
Installation and Using Amplifier

*GT*trading

AUDIO
SYSTEM

Italy

ADSP6

DIGITAL SIGNAL PROCESSING

Index

1. PRODUCT DESCRIPTION - PRECAUTIONARY NOTES	03
2. PACKAGING CONTENTS	03
3. ADSP6 AND DRC INSTALLATION	04
4. CONNECTION PANELS - DESCRIPTION	05
4.1 Input signals	05
4.2 Output signals	06
4.3 Inputs - remote control outputs and power supply	06
5. CONNECTIONS	07
5.1 Power supply and remote turn on	07
5.2 Speaker wiring	07
5.3 Personal computer and Digital Remote Control (DRC)	08
5.4 High-Level input signals	08
5.5 Low-Level input signals	09
5.6 Output signals	09
6. SOFTWARE INSTALLATION	10
6.1 USB driver installation	10
6.2 DSP GUI installation	11-12
7. GUI OPERATION INSTRUCTION	13
7.1 Guide to GUI after installation	14
7.2 Interface introduction	14-16
8. STANDARD INSTALLATION REFERENCE	17
8.1 5 channel stand alone treble mode	17
8.2 5 channel Passive X-Over treble mode	17
8.3 8 channel separate treble, middle mode	18
9. REMOTE INTRODUCTION	19
10. TECHNICAL FEATURES	20

1. PRODUCT DESCRIPTION / PRECAUTIONARY NOTES

The ADSP6 is a digital signal processor essential to maximize the acoustic performance of your car audio system.

It consists of a 32-bit DSP processor and 24-bit AD and DA converters.

It can connect to any factory system, even in vehicles featuring an integrated audio processor, since, thanks to the de-equalization function, the ADSP6 will send back a linear signal.

It features selectable High and low level inputs as well as 3.5mm Aux and digital inputs that feed 8 completely variable output channels. Each output channel has a 31-band equalizer available. It also features a 66-frequency electronic crossover as well as BUTTERWORTH filters with 6-24 dB slopes and a digital time delay line. The user can select adjustments that allow him or her to interact with the ADSP6 through a remote control device called DRC.

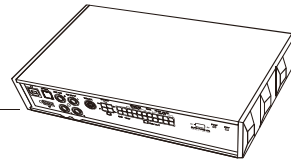
WARNING: 1- a PC provided with Windows XP, Windows Vista or Windows 7 operating system, 1.5 GHz minimum processor speed, 1 GB RAM minimum memory and a graphics card with a minimum resolution of 1024 x 600 pixels are required to install the software and setup the ADSP6.



2- Before connecting your ADSP6, carefully read this manual. Improper connections may cause damage to the ADSP6 or to the speakers in the car audio system.

2. PACKAGING CONTENTS

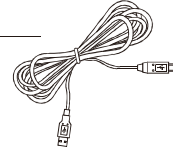
- ADSP6 - Signal Interface Processor



- Power supply cable / Remote / Inputs



- 5.0 m USB cable



- 2 of 4.0 x 16 mm self-tapping, cross-head fixing screws



- CD ROM with:
ADSP6 software
This advanced manual (.pdf format)
Test tracks

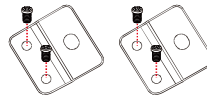


OPTIONAL:

- DRC (Digital Remote Control) control panel



- 2 fixing brackets with 2.5 x 1.75cm self-tapping, cross-head screws

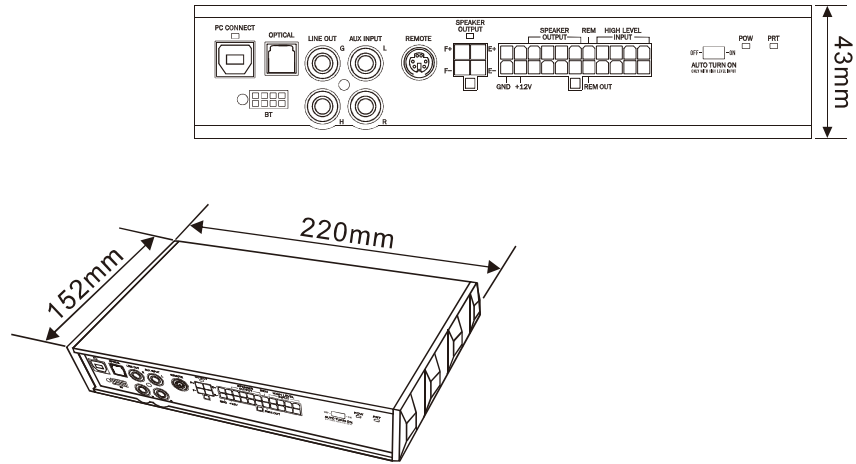


- 5.0 m DRC - AC Link cable

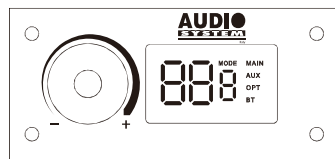


3. ADSP6 AND DRC INSTALLATION

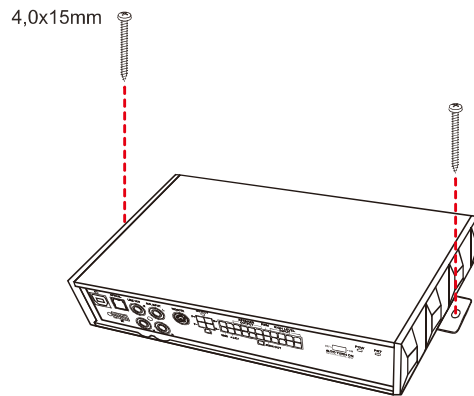
External dimensions



How to install

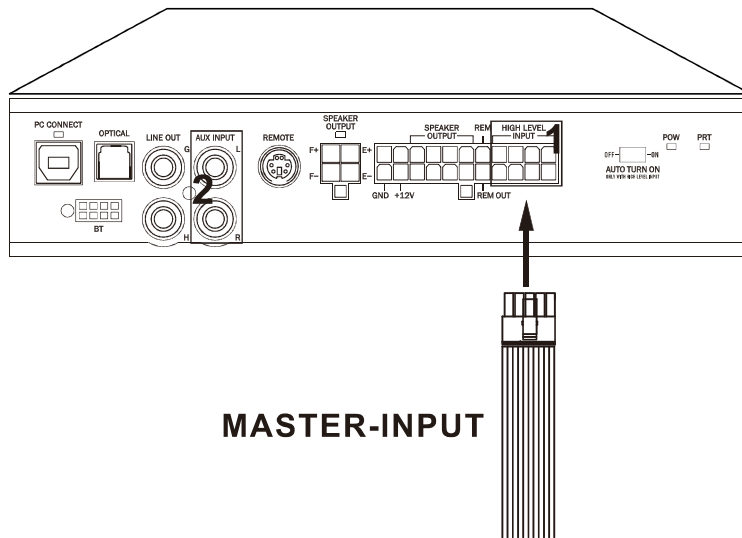


Warning: do not use aggressive cleaning agents or abrasive cloth to clean the display. Simply use a soft cotton cloth lightly damped with water.



4. CONNECTION PANELS – DESCRIPTION

4.1 INPUT SIGNALS



1. **HIGH INPUT:** High level input switch

2. **AUX IN L - R:** auxiliary low-level stereo input.

The ADSP6 comes with an auxiliary stereo signal input to connect an external source, mp3 player, audio sources. Input sensitivity is adjustable from 0.6 to 5 V RMS.

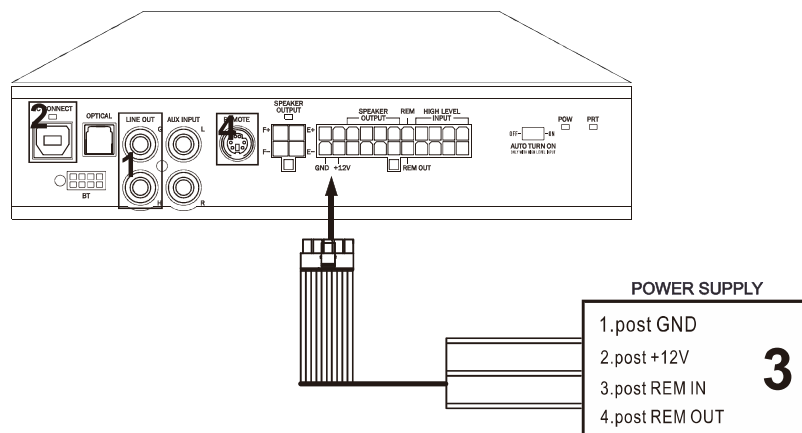
Remark: If a low-level output source (PRE OUT) with output signal equal or greater than 2 V RMS is available, you can connect it to the high-level MASTER inputs (SPEAKERS). Sensitivity is increased by adjusting the IN LEVEL controls.

4.2 OUTPUT SIGNALS

1. G/H

2. USB

USB (type B) connection plug, to connect the processor to a PC and manage its functions through the ADSP6 software. The connection standard is USB 1.1 / 2.0 compatible.



4.3 INPUTS – REMOTE CONTROL OUTPUTS AND POWER SUPPLY

3. POWER SUPPLY.

+12V: Positive connection terminal for car 12V power supply.

GND: Power supply negative connection terminal (GND).

WARNING: make sure the connection polarity is as indicated on the terminals. A misconnection may result in damage to the ADSP6. After applying power, wait at least 10 seconds before turning the ADSP6 on.

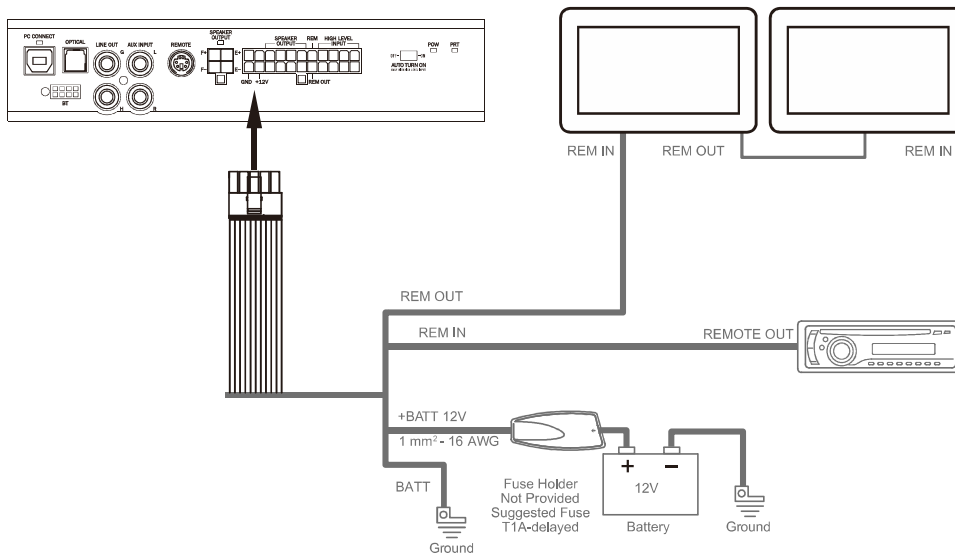
4. REMOTE SOCKET: Only for remote control of spare parts.

WARNING: the ADSP6 must be switched on before any amplifiers are turned on. The system sources Remote Out must be connected to the product REM IN, and the product REM OUT is then to be connected to the Remote In of other devices / amplifiers.

5 CONNECTIONS

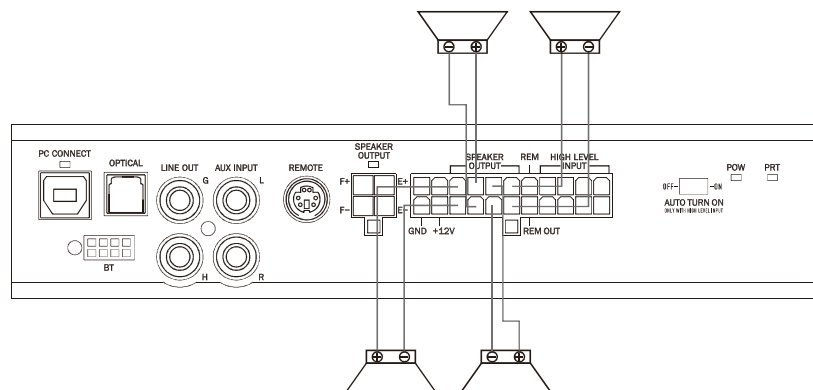
5.1 POWER SUPPLY AND REMOTE TURN ON

! WARNING: to power the device, use 1 mm² (16 AWG) cables.

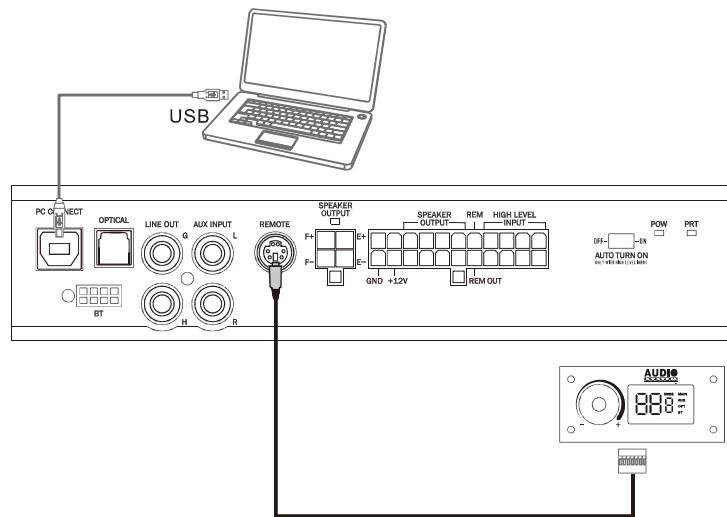


Remark: There is no fuse in DSP. We recommend on external fuse device.

5.2 SPEAKER WIRING

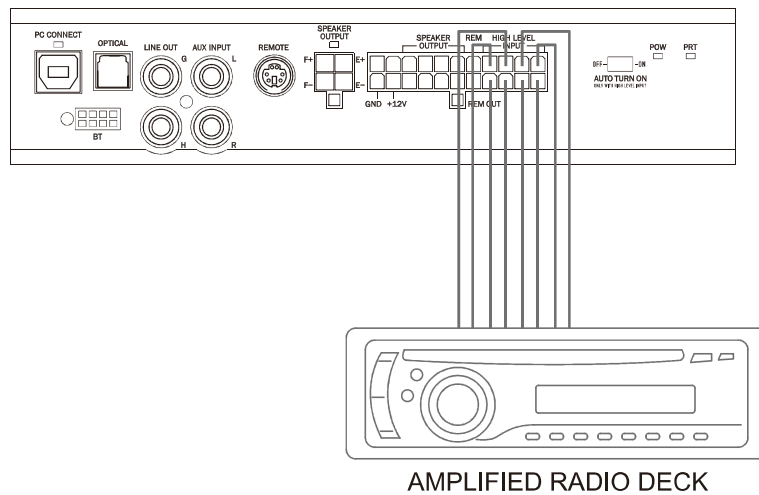


5.3 PERSONAL COMPUTER AND DIGITAL REMOTE CONTROL (DRC)

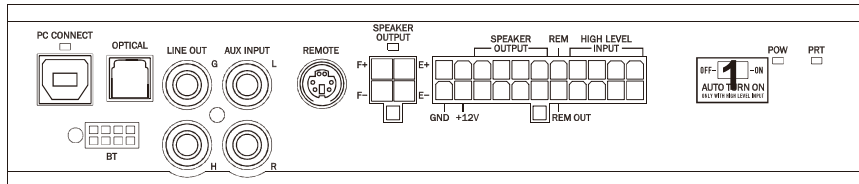


5.4 HIGH-LEVEL INPUT SIGNALS

1. SPEAKERS IN HI-LEVEL STEREO FRONT+REAR



5.5 LOW-LEVEL INPUT SIGNALS

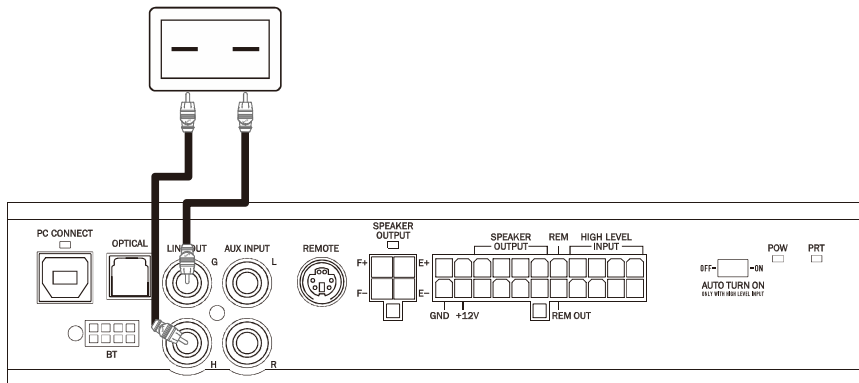


1. AUTO TURN ON

Signal auto power on and ACC power on selection.

5.6 OUTPUT SIGNALS

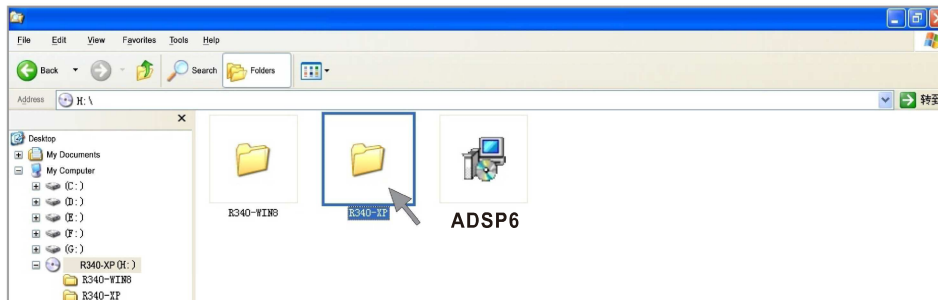
OUTPUT TO AN AMPLIFIER'S SYSTEM



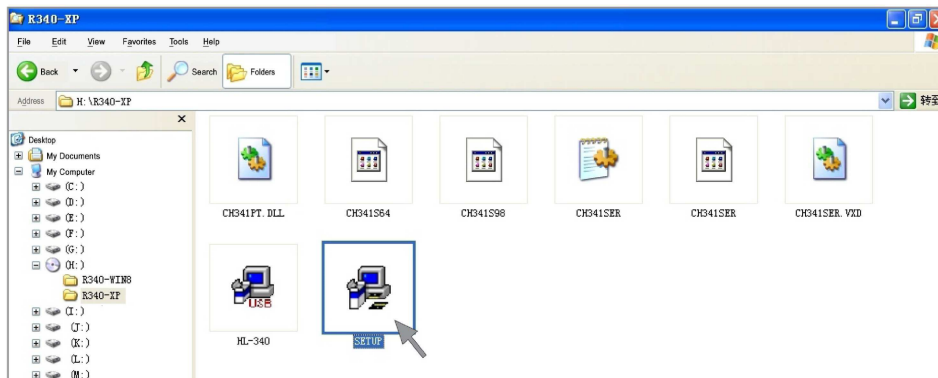
6 SOFTWARE INSTALLATION

6.1 USB DRIVER INSTALLATION

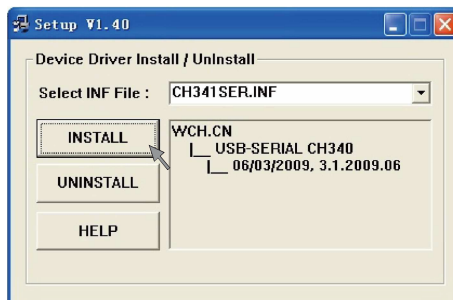
1. Insert CD, select installation file according to your computer system in ADSP6 folder.



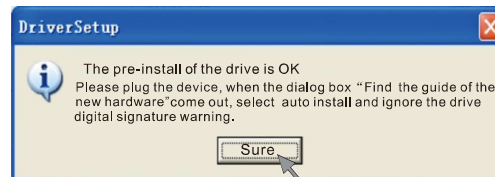
2. Double - Click SETUP to begin installation



3. Start installation

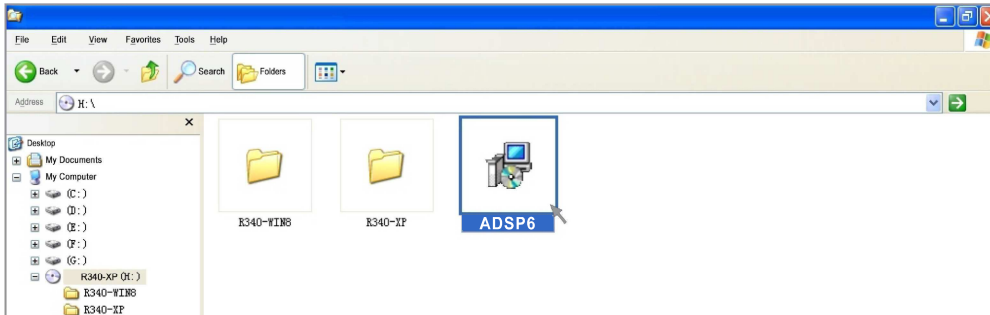


4. Click confirm to finish installation

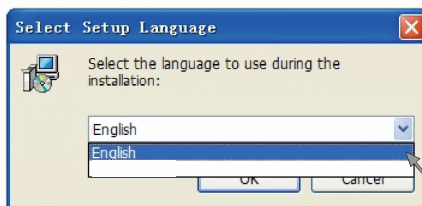


6.2 DSP GUI INSTALLATION

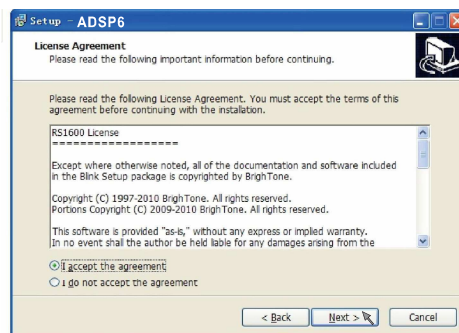
1. Double - click ADSP6



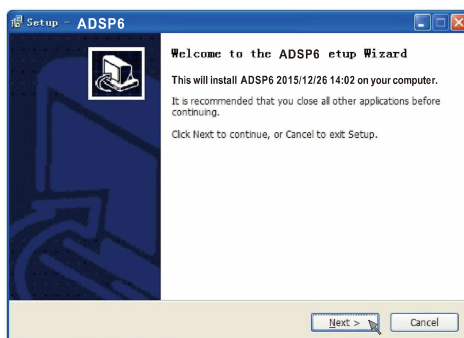
2. Pick your language



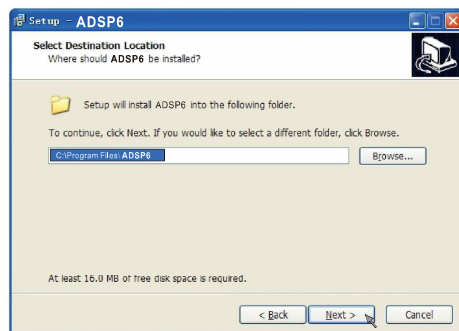
4. Choose "I accept the agreement"



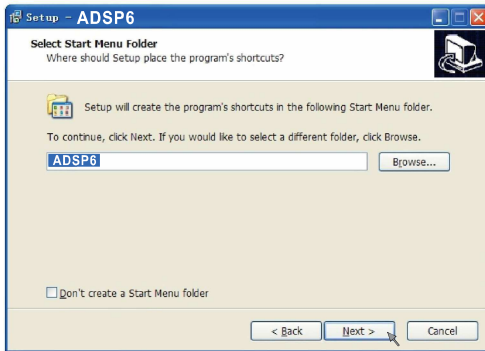
3. Click NEXT



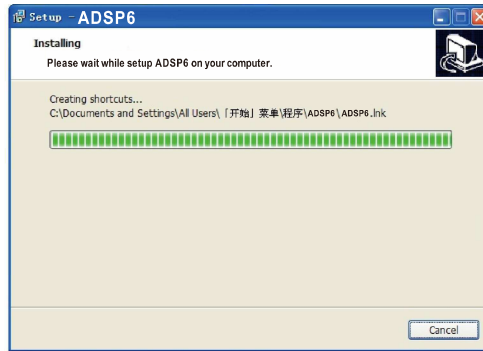
5. Set install location



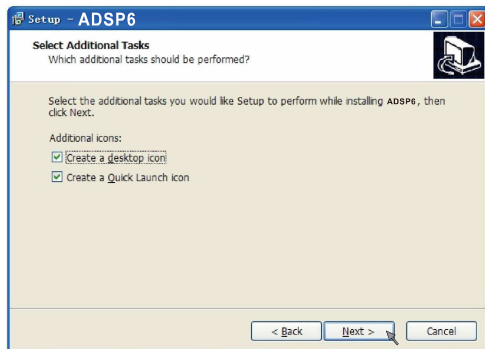
6. Click NEXT



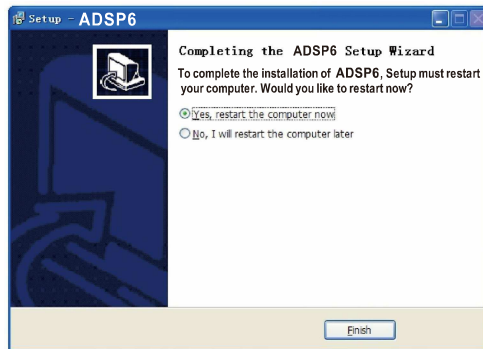
9. Wait until the process finish



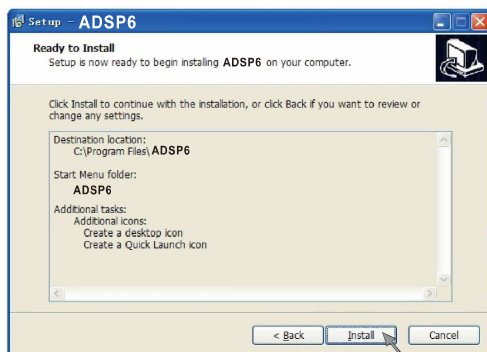
7. Creat shortcut to desktop



10. Installation completed, reboot computer



8. Click Install to begin



7 GUI OPERATION INSTRUCTION

7.1 GUIDE TO GUI AFTER INSTALLATION

1. Double - click icon of DSP_DSP6



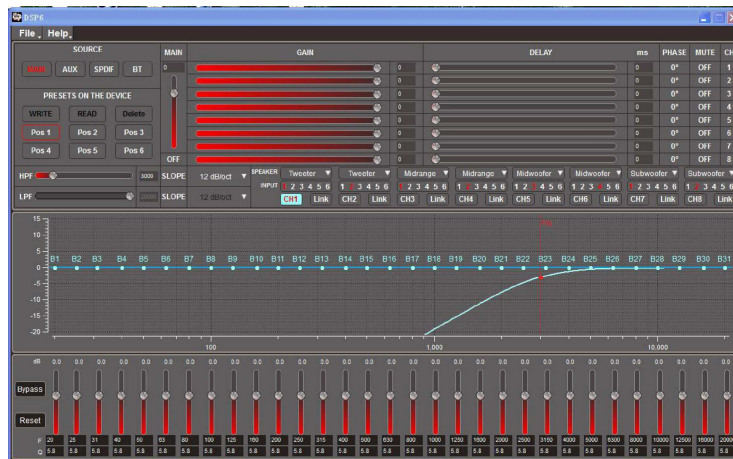
2. Mode selection (Online mode must be selected after PC connected to DSP)



3. Sound channel configuration

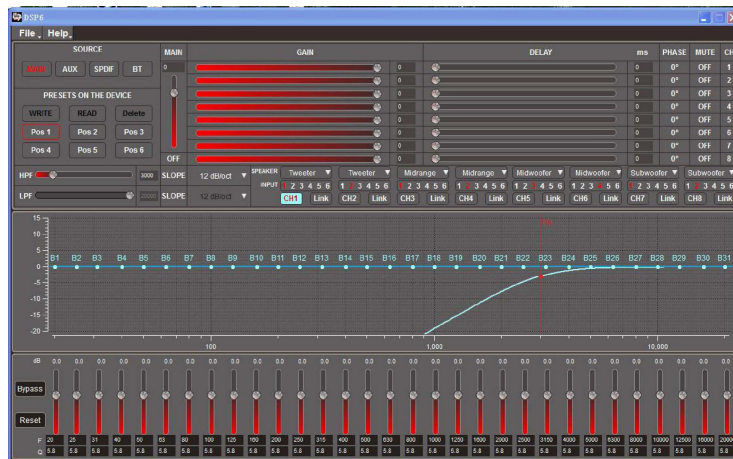


4. Enter the GUI you long for! Now you could tone every signal details as experts do to bring sound effect on your beloved car to a higher level.



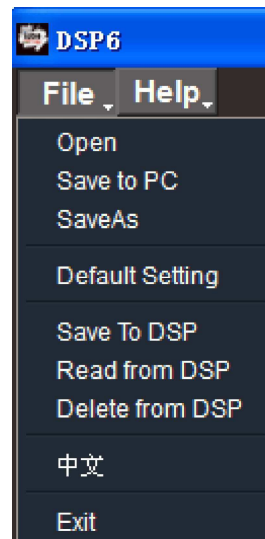
7.2 INTERFACE INTRODUCTION

1. DSP interface guidance



2. "FILE" MAIN MENU ①

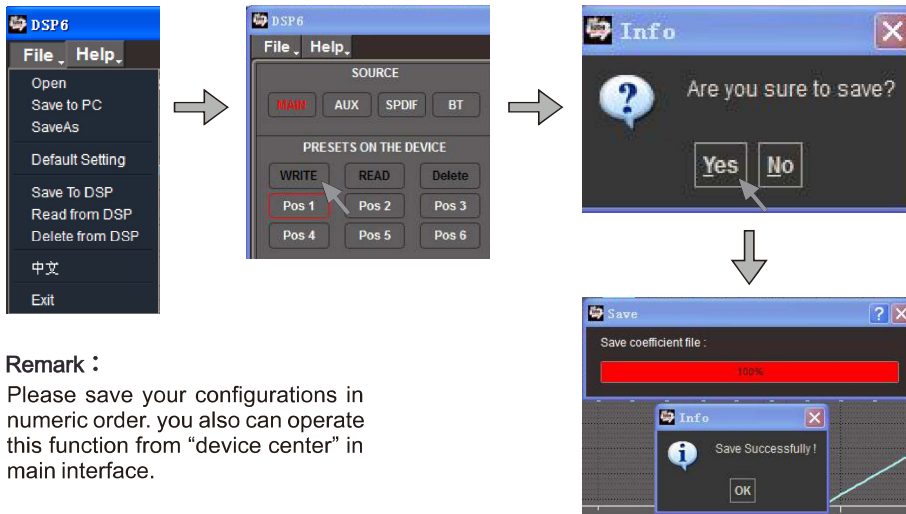
1. Open (To load preset file in PC folder)
2. Save (To save setting to PC)
3. Default setting (restore to default setting)



- Input signal mixed in the channel configuration interface: select the mix, and system login the input signal function.



Download (store set configuration into DSP)



Remark :

Please save your configurations in numeric order. you also can operate this function from "device center" in main interface.

- "INPUT MODE" ①

To select different input devices.



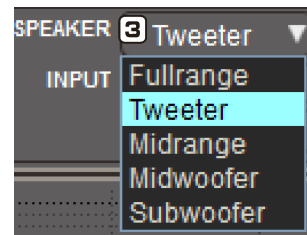
- "CHANNEL SETTING" ②

Options on the left side are for combine setting for L CH and R CH.

Options on the right side allow you tone each selected channel respectively.

- "CROSSOVER X-TYPE" ③

To choose different crossover type, for example select CH selection on 3rd spot, That would locate CH you want to choose for crossover configuration.



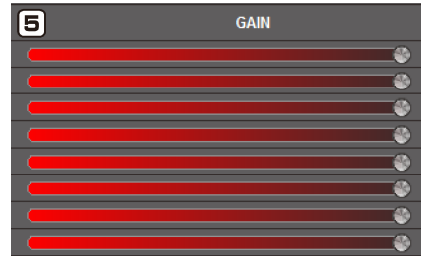
- "CROSSOVER FREQUENCY" ④

Set frequency of LP/HP individually.



5. "GAIN" **5**

"0--40dB" is optional range for gain control of every CH.



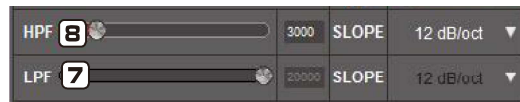
6. "DELAY" **6**

- 1.Auto configuration (base on 1.5 setting)
- 2.Manual configuration, change specifications in selected CH manually.



7. "LP/SLOPE" **7**

6dB/oct, 12dB/oct, 18dB/oct, 24dB/oct, 30dB/oct, 36dB/oct, 42dB/oct, 48dB/oct are available.

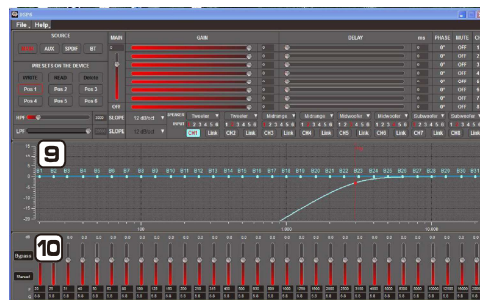


8. "HP/SLOPE" **8**

6dB/oct, 12dB/oct, 18dB/oct, 24dB/oct, 30dB/oct, 36dB/oct, 42dB/oct, 48dB/oct are available.

9. "X-OVER AND EQ CHARTS" **9**

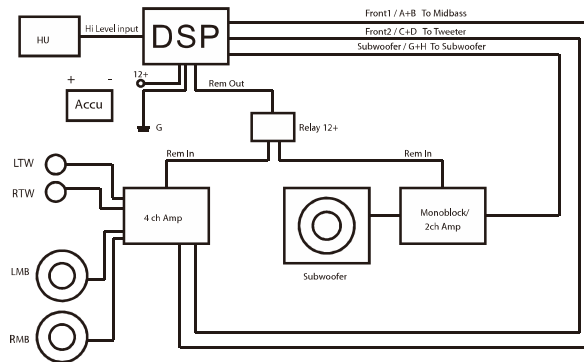
Red lines and slopes will change accordingly when HP/LP of crossover and EQ are modified.



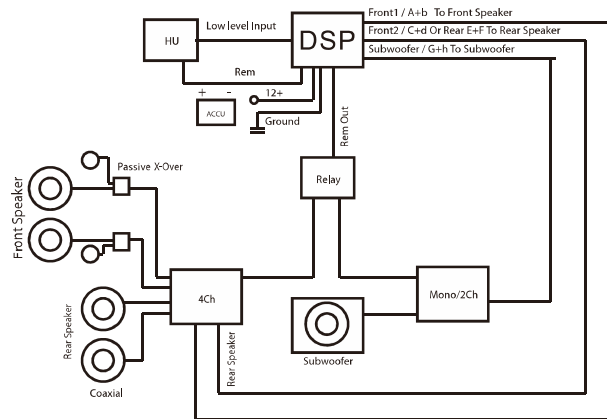
10. "EQ SETTING" **10**

8. STANDARD INSTALLTION REFERENCE

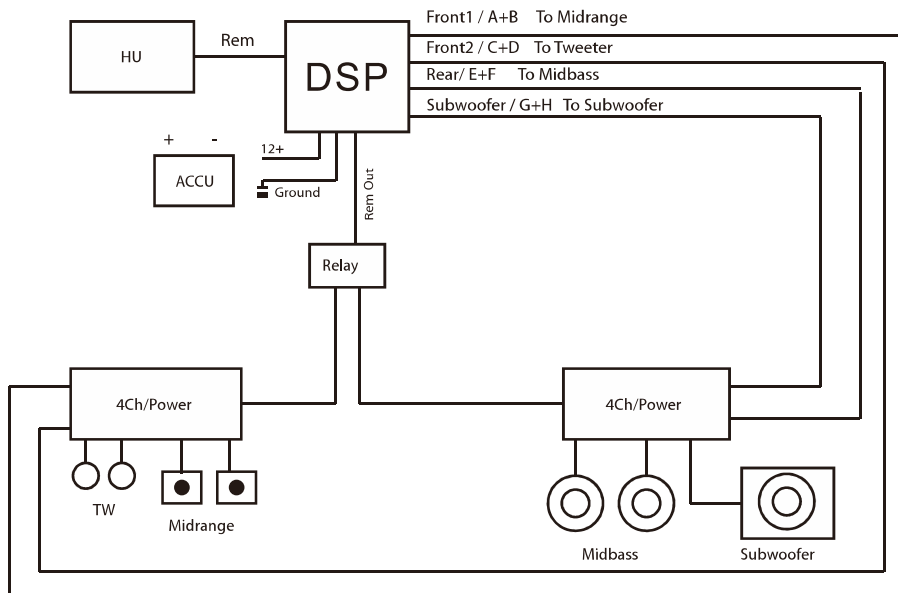
8.1 5 CHANNEL STAND ALONE TREBLE MODE



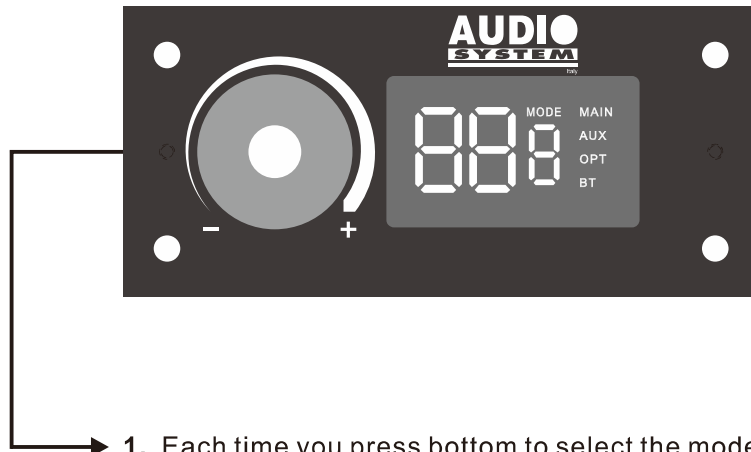
8.2 5 CHANNEL PASSIVE X-OVER TREBLE MODE



8.3 8 CHANNEL SEPARATE TREBLE, MIDDLE MODE



9 REMOTE INTRODUCTION



1. Each time you press bottom to select the mode
2. Switch to change the value after selected the mode
3. Long press 3 seconds to mute